



## 1SV. NEDJELJA (CLIFFBASE) ROUTE LIST

This super-crag is situated eastward from the little village of Sv. Nedjelja on the south side of the island and is the place to be for all around climbing and enjoying. The crag is sometimes called Sv. Nedjelja, sometimes Šuplja Stina and sometimes Cliffbase, the latter being the name given to the crag by its owner (see [cliffbase.com](http://cliffbase.com)).

This is the most popular climbing spot on the island and for good reasons. You will find easy and hard routes, DWS, DWS boulder traversing and stunning nature.

### Basic info

Parking – No

Approach – Walking 10min

Season – All through the year, shade in the afternoon during the summer

Climbing – Easy, moderate and hard. Frequently longer routes. Lot' s of DWS.

Equipment – Sport climbing equipment, up to 80m rope, up to 25 quickdraws.

Routes sometimes have two pitches, take abseiling equipment.

Route list – [Click here](#)

Entry – By reservation only, see below

### Directions

There is just one official road going to Sv. Nedjelja and it starts from Jelsa towards Pitve, then through a one-way tunnel towards Zavala and Ivan Dolac. Once you are out of the tunnel, just go right down the coastline until you reach Sv. Nedjelja. In the village, turn left towards the sea and park at the sea front.

Other possible road to Sv. Nedjelja – be careful (!!): If you are staying in the town of Hvar or other small places on the south west of the island, you may venture and take a non-asphalt road towards Sv. Nedjelja, going right just before the tunnel between Hvar and Starigrad. This will save you some 40km of driving, but will surely pump adrenaline into you as you drive near the vertical falling cliffs on a macadam

road. Take this "road" only on your own responsibility and ask the locals about the current conditions.

## Approach

Important note: the only legal way to reach the crag from Sv. Nedjelja harbor is by sea, so you can either take a boat from the harbor or walk down the coastline to the east from the harbor for 0,7Km. Please contact the owner of the crag, Mr. Miro and ask for further info. You will find contacting details at the bottom.

## Characteristics

This crag is facing south and is at the sea level. Best seasons for climbing are winter, autumn and spring. In the summer, people enjoy the endless DWS lines or just being lazy at the beach until around 5PM when the sun goes over the cliff. There are some routes in the shadow even during the day though.

Admission to Cliffbase is limited and by reservation only. By arranging your accommodation through [cliffbase@cliffbase.com](mailto:cliffbase@cliffbase.com) you automatically reserve space at Cliffbase for you and your entire party, and receive a 50% discount on your entrance ticket.

Mgr. Miroslav Stec (Cliffbase manager)

E-mail: [Cliffbase@cliffbase.com](mailto:Cliffbase@cliffbase.com)

Facebook account name: Cliffbase

Web: [www.cliffbase.com](http://www.cliffbase.com)

Tel: +385 91 764 81 82

Sv. Nedjelja, Posta Jelsa 21465, Croatia

## Sv. Nedjelja route list from left to right

The routes are often multipitch with the crux mostly in the second pitch. There is often an anchor after the first pitch so the first part is a sports route in itself. If you need a better picture, you may need to buy the guide or ask the owner once you are there.

Sector A/1 – Garden (above the house, starting from the shit house, left to right)

1. Hajzl route 6c 7bolts 20 m
2. Maestral 7a 7bolts 20 m
3. Red line cave 7c 7bolts 20 m
4. Jeniffer lady 7b 7bolts 20 m
5. Dragan boss 7a 7bolts 20 m
6. Cracker 7b 8bolts 20 m
7. Hacker 7b+ 8bolts 20 m
8. Coyote 8a 10bolts 20 m
9. Desert in you 7c+ 9bolts 20 m
10. Sand rock 7b 9bolts 20 m (left)
- 10-a. Sand beauty 6b+ 9bolts 20 m (right)
11. Artefact 7b+ 16bolts 30 m
12. Little crack 7b+ 15bolts 30 m
13. Eagle 7b+ 17bolts 30 m
14. T2 kings 7b 17bolts 30 m
15. Central Crack 7a 16bolts 30 m
16. Lost in Bosna 7b 18bolts 30 m
17. Sarajevo 7a+ 17bolts 30 m
18. Green elephant 7a+ 17bolts 30 m
19. American Express 7a 17bolts 25 m
20. Las Vegas 7a 17bolts 32 m
21. Left pipe 6b (5b, 6b) 14bolts 32 m
22. Right pipe 6c (4c, 6b) 15bolts 32 m

Sector A/2 – Pine (down from the house, under the pine)

23. Big crack 6a+ 19bolts 30 m
24. Iglozubec Škaredy 6b 15bolts 35 m
25. Gate 6a+ 17bolts 40 m
26. Evanjelium 5c 16bolts 41 m
27. Big blue 6a+ 18bolts 41 m

- 28. Andante 5c 15bolts 40 m
- 29. Baracuda 6b+ 12bolts 40 m
- 30. Capcara 6c 17bolts 40 m
- 31. Pica 6a 5bolts 20 m
- 32. Extaza 7a (5c,7a) 18bolts 40 m
- 33. Post Coitum 6a 18bolts 40 m
- 34. Luk 5c (5c,5b) 13bolts 40 m
- 35. Marion 6a (5b,6a,5b) 13bolts 40 m
- 36. Isabelle 6a+ (5a,6a+,5b) 15bolts 40 m
- 37. Selfcontrol 6a (5a, 6a, 5b) 14bolts 40 m

Sector B/2 – Harbor (down from the pine to the little harbor with rusted boats)

- 38. Paradise Garden 7a (5b,7a,5b) 17bolts 40 m
- 39. Agule 6c+ (5a,5b,6c+) 14bolts 30 m
- 40. Drum and Base 6b (5b,5c,6b) 14bolts 35 m
- 41. Laura Lisa 6b (5c,5c,6b) 14bolts 35 m
- 42. Dine 6a (6a,5b) 7bolts 20m
- 43. Knife Cut 5b 8bolts 20 m
- 44. Edge of the Ass 5c 5bolts 10 m
- 45. The Ass 7a (6a,5c,5b,7a) 16bolts 35 m
- 46. Brak 7b (6a,5b,5c,7b) 16bolts 35m
- 47. Settagon 7a (6a,6a+,5b,7a) 19bolts 35 m
- 48. Jumper 6a+ (5c,5b,5c,6a+) 18bolts 35 m
- 49. Right Jumper 5c/5c 9bolts 20 m
- 50. Raid Road Bill 6a (5c,6a) 17bolts 37 m
- 51. Hi Jou 6b 16bolts 37 m
- 52. Colakappa 6a+ (6a+,5c,5c) 20bolts 40 m

Sector B/I2 – Shadow (cliff shadowed by the tower)

- 53. Tuga & Buga 6a+ (6a+,5b,5c) 17bolts 40 m
- 54. Had 6c+ 11bolts 30 m
- 55. Salamun 6b 10bolts 30 m
- 56. Houmy 6a 12bolts 30 m
- 57. Rafacka 6a 12bolts 30 m

- 58. Grč 6a 7bolts 20 m
- 59. Kvak 1 5c 3bolts 8 m
- 60. Kvak 2 6a 3bolts 8 m
- 61. Čudo 6a+ 7bolts 20 m
- 62. Luca 6c+ 9bolts 20 m
- 63. Šlaifec 6c+ 14bolts 33 m
- 64. Monana 6a 14bolts 33 m
- 65. Haide 5c 12bolts 33 m
- 66. Robinja 6b 13bolts 30 m
- 67. Boli me lulek 6b+ 13bolts 30 m
- 68. Bresca 6b+ 14bolts 30 m
- 69. Nastas 6c 15bolts 30 m
- 70. Bajlanda 6c 12bolts 30 m
- 71. Plavac 5c 9bolts 30 m
- 72. Plavac direkt 6b/6a 14bolts 30 m

Sektor C (after the tower to the east, you need to traverse over fixed rope). Some of the routes marked are variants and last pitches

- 73. Kralovka 6b 14bolts 33m
- 73-a. Kralovka direkt 7b 4bolts 8m
- 74. Eset 6b+ 15bolts 33m
- 75. Rimrock 7b (6b,7b) 13bolts33m
- 76. Dual doubt 6c+ 11bolts 35m
- 78. Accelerator 6b 13bolts 37m
- 78. Pace nowhere 6b 14bolts 40m
- 79. Matrix 6b 14bolts 40m (3 artificial holds)
- 80. Atractor 6b 13bolts 40m
- 81. Gekon 6a+ (5c,6a+) 11bolts 38m
- 82. Captain Cormoran 6a+ (6a,6a+) 14bolts 38 m
- 83. Nothing but twice 6a+ (5c,6a+) 10bolts 35 m
- 84. Arch 5b 4bolts 16m
- 85. Complete Arch 6a (5b/6a/5b) 13bolts 38m
- 86. Alexandria 6a (5c/6a) 12bolts 35m
- 87. Merlin 6a (6a/6a) 14bolts 36m
- 88. Essential trick 6b (6b/5b) 14bolts 38m

- 89. Cliffbase 6b 10bolts 25m
  - 90. (extension) Azagnat and lufy 7c+? 8bolts 12m (first 3 pitches 7b,6a,5b)
  - 91. (extension) Direkt March 8a+? 6bolts 11m (first two pitches 5c,6a)
  - 92. (extension) March 7a+ 6bolts 12m
  - 93. Jebiga 8a? (first two pitches 6b,5b) 5bolts 9m
  - 94. Desno 7c? 7bolts 12m
  - 95. Cliffbase.com 6c+ 6bolts 15m
  - 96. Adirondack 6a (5c,6a) 12bolts 42m
  - 97. Pearls to pig 5c 9bolts 42m
  - 98. Lagunas pillar 5b 9bolts 42m
  - 99. Marko Polo 6c+ 5bolts 25m
  - 100. Crown point 6b 5m 25m
  - 101. Kamin povratka 5c 1bolt 25m
  - 102. First Deep water solo 5c No-Bolts 21m
- Sea traverse all the way 8a

## Tower

Now the routes on the free-standing tower

### Sector D/1 (North internal side of the Tower)

- 1. Santa Domenica 6a 12 m
- 2. Pendulum Drc 6c 20 m
- 3. Ryvola 6c 20 m
- 4. Mr.Fucker 6c 22 m
- 5. Hole finfering 7a 25 m
- 6. Maestre 6b 25 m
- 7. Liquere I 5c
- 7a. Liquere II top part 6c+ 33 m
- 8. Miss Jadrana I 6c
- 8a. Miss Jadrana II top part 7a 33 m
- 9. Left Stalker 6a+ 30 m
- 10. Right Stalker 6a+ 30 m
- 11. Pizdic sten 6a+ 30 m
- 12. Galjot 6a+ 26 m
- 13. Stara Vojna 7a 30 m
- 14. Edge north 7a 30 m

## Sector D/2 – West external side of the tower

- 15. Edge west 6c 20 m
- 16. Ticha dohoda 6c+ 20 m
- 16a. Ticha dohoda – direct variant 7c 20 m
- 17. Sagena 7b 20 m
- 18. Brid sunca 5c 20 m

## Sector D/3 – South side of the tower

- 19. Stari put 5b 20 m
- 20. Salpa 5b 20 m
- 21. Laguna 5b 20 m
- 22. Sea behind 5c 15 m
- 23. Adriatica 5c 15 m

## Sector D/4 – East side of the tower

- 24. Dream 7b

[Click here for pictures from Sv. Nedjelja](#)

## 2 SV. NEDJELJA (HILLS ABOVE THE VILLAGE)

These are actually several distinct climbing areas on the hills of Sv. Nedjelja. None of them are climbed very often so please ask around in Cliffbase if you need detailed descriptions on how to get there. There are more areas being developed in the hills of Sv. Nedjelja and when all is finished, we will publish more detailed information.

These climbing areas are very much off the beaten track and some of them are frequented by snakes more than climbers. Go there either if you a) want to free one of the super hard routes or b) want to enjoy really technical slabs.

Basic info

Parking – In the village or on the hill of Sv. Nikola

Approach – Walking 30-45min from the village, same distance from Sv. Nikola

Season – Spring, Autumn, Winter. Summer is way too hot.

Climbing – Moderate and hard.

Equipment – Sport climbing equipment, up to 70m rope, up to 15 quickdraws.

Route list – [Click here](#)

Getting there

You get there by taking a hike from Sv. Nedjelja towards the cave via a well marked route. The hike will take you about 30-45 minutes and try to avoid doing it when the sun is too strong, but once you are up there there is enough shadow to cool you down. The scenery from up there is stunning as is the view that reaches to Italy on clear days. To reach the village Sv. Nedjelja, check out our directions at the other [Sv. Nedjelja](#) article. Check out our interactive [map](#) for further details.

To reach the larger sector, there is now a better approach. Take the car to St. Nicola' s hilltop, ask around with the locals how to get there from your base (there are different dirt roads). Once you get there, hike for 10 minutes until the church Gospa od zdravja. The cliff with slabs is 50m to the west under the church, approach is from the west side on not so steep terrain.

## Characteristics

Climbing in the cave is obviously on the hard side. There are several routes that are already graded and some projects. Climbing outside the cave on the wall is on the medium towards harder grades, but very specific slab climbing. There is a limited number of routes on the location, somewhere around 8 all together, but it may be worth while your journey at least for the view from up there.

The church is on state property and the cave is private property so please respect the owners and the sanctity of the place, so future climbers can visit and climb this gorgeous location

### Sector – below the church Gospa od Zdravja

Fritula 6b+

Jana 6b

Medo, the best dog 6a

Neda se 7a

Plenki 7a

Tovar 6a+

Sector – cave

Dirali ste broj, koji se ne koristi (project in the middle) 8c

Project ?

# VELA STINIVA

Click here for pictures of Vela Stiniva:



Vela Stiniva is one of the two **super-crag**s of the Island. It features two main sectors – one for hard climbing and one for easy and beginner climbing.

## Basic info

**Parking** – Yes

**Approach** – Walking 5-10min

**Season** – All through the year, shade in the West sector during summer

**Climbing** – Overhangs and tufas, moderate and hard mostly

**Equipment** – Sport climbing equipment, up to 70m rope, up to 15 quickdraws

**Route list** – [Click here](#)

## Directions

The climbing area is situated in a little cove called Vela Stiniva, with no more than a dozen houses and a nice beach. If you are coming from the direction of **Starigrad/Hvar/Jelsa** and other places on the west side of the island, just take the main road to Sućuraj. After about 15km from Jelsa, you will reach a hill-side village Zastrazišće. In the village itself, turn left at the sign for “Vela Stiniva” and just follow the road to the sea.

If you are coming from Sućuraj or other places on the east side, or you are taking an express 30min ferry from Drvenik (near Makarska, on the mainland), just carry on towards Jelsa for 30km and the same sign appears on the right side. The roads on the east side of the island leave a lot to be desired so drive carefully.

Please see our [interactive map](#) for a detailed location.

## Approach

### Main sector West

The main moderate and hard climbing sector is located on the west side of the cove, featuring a large cave and slight overhangs around it, including some superb terrain for belaying and chilling in the shade. When approaching the sector, you will first reach the bottom of the cove near the parking spot and then walk westward towards the houses under the sector. It is a little tricky to navigate around the houses but please take your time and do not walk through private property and gardens. The sector itself is also partly located at private property so respect the owners and respect the silence and nature of the cove.

## **Sector East**

There is superb potential on the east side of the cove as well, but it has not yet been well equipped with enough routes. You will find up to 10 routes there.

## **Sectors A and B**

The easier sectors are by the road when approaching the cove and you will see them as you drive, both on the left and right sides. There is a little parking spot on the left side of the road, enough for 2 cars.

## **Parking and Accomodation**

You can currently park at a small parking near the restaurant, but please use this wisely since it is not yet being charged, but heavy usage may change the situation.

There is no camping in Vela Stiniva itself and wild camping is forbidden in Croatia so you may be fined if you try. There is private accommodation all around the island and also in Vela Stiniva. If you do not plan to move much, you can stay there, but if you plan to visit other crags you should place yourself more strategically. See our [accommodation](#) section for more info.

Sectors map:



Sector A " " "By the road"



**How to reach this sector:** Prior to reaching the bay, you will see a *not-so-tall* rock formation and a parking for 2 cars on your left. On the left side of the road is Sector A. It is good for your small children or climbing schools, but not for much else.]

**Routes from Left to right:**

1. Cusco 5a 8 m
2. Yzma 5a 8 m
3. Kronk 5b 8 m
4. Pacha 5a+ 7 m
5. Tico 5b+/c 7 m
6. Berni 5b+ 8 m
7. Lina 5c 8 m
8. Toja 5b+ 8 m
9. Gaj 5b/b+ 8 m
10. Dolly 5a/a+ 7 m
11. Tetris 5a/a+ 7 m
12. Katja 5b+ 7 m
13. Dexter 5b+ 7 m
14. Baltazar 5b+ 7 m

15. ? 5c 6 m
16. ? 5c 6 m
17. ? 5c 6 m
18. ? 5c 6 m
19. ? 5c 6 m
20. ? 5c 6 m
21. ? 5c 5 m
22. ? 5c 6 m
23. Traverse all routes from right to left, 6b+ (be careful and have a solid belayer)

## Sector B " " "Above the road"

**How to reach this sector:** Prior to reaching the bay, you will see a *not-so-tall* rock formation and a parking for 2 cars on your left. On the right side of the road is Sector B. It is good for your small children or climbing schools, but not for much else.

### Routes from Left to Right

1. Liba 5c 7 m
2. Laca 5c 7 m
3. Lak 5c 7 m
4. !/zelva 5c 7 m

## Sector C " " "Cave"



**How to reach this sector:** When you reach the seafrent, park on the public parking. The only **legal** way to reach the sector is by backtracking up the asphalt road until you reach a small basketball court. Walk right into the dirt road and then again right behind the houses, following the dirt road. At the end of the dirt road, you will see a small wood track, the sector is just 50m from there. This sector is the crown of Vela Stiniva.

### **Routes from Left to Right**

1. Udruga stina 5c 12 m
2. Santa Maria 6b/b+ 12m
3. Galeb 6c 13 m
4. Zubatac 7a+ 13 m
5. Lavanda 6b+ 15 m
6. Crossing Villi<sup>1</sup> 7b+<sup>1</sup> 17m
7. Free Villy 7b 17 m
8. Maestral 7a+ 17 m
9. Bonaca 6c+ 17 m

10. Sahara 6c+/7a 19 m
11. Potala 7a+ 19 m
12. Tramuntana 7a+/b 16 m
13. Shark 8a 17 m
14. Hot Tuna 8a+ 17 m
15. Genom 8a 18 m
16. Project ? (first one on the right side of the cave, open project) 21 m
17. Project ? (open project) 15 m
18. Message in the bottle 7a+/b 14 m
19. Spartak 7b+ 13 m
20. Mediteranea 7a 13 m

### Sector D " " "East side"



**How to reach this sector:** When you reach the seafront, park on the public parking. Backtrack up the east side of the asphalt road and take the last turn up to the woods where possible (after the

houses). There are different approaches, most of them include bushes as obstacles, since this sector is not popular for tourists (summer heat) and it is off-the-beaten-track.

**News:** in Sector D are two different group of routes. Please see the picture. Also, some of the routes have been added with non-glue spits so please be cautious and please **report to our e-mail if you see any resting in bolts.**

### **Routes From right to left:**

#### **Not glue bolts:**

1. Love at first sight 7a+/b 20m
- 1a. ? 6c 15m
2. ? 5c 12m
3. 6a+ 14m
4. ? 7a 15m
5. ? 7a 15m
6. ? 6a 15m
7. ? ? 13m
8. ? ? 13m
9. ? 6c 22m
10. ? 5c 25m
11. ? 5c 25m
- 10a ? 7a 25m
- 12 ? 6b 24m
13. ? 6c 25m

#### **Glue bolts:**

14. Der hvare Held 7b 26m
15. Leistentrauma 7a+ 26m
16. Lesitertraum 6c+/7a 30m
17. Viva Stiniva 6b+ 27m



Sector D “ Topo “ #1

### Sector E “ “Above the cave”



**How to reach this sector:** When you reach the seafront, park on the public parking. The only **legal** way to reach the sector is by backtracking up the **western (upward)** asphalt road until you reach a small basketball court. Walk right into the dirt road and then again right behind the houses, following the dirt road. At the end of the dirt road, you will see a small wood track. In front of you is the “Cave sector”, but take the left wood track uphill to reach this sector.

Routes are still fresh so be careful, you may still find some loose rock. We advice the use of a helmet for both the belayer and the climber.

## **South-East Rock**

### **Routes from Right to left**

1. SO-Verschneidung, 25m, 5b
2. Fastenzeit, 25m, 6b+
3. Easy cheesy, 13m, 6a+/b
4. Kleiner Donner, 22m, 6c+
5. Mopfeiler, 22m, 6b+
6. U-Runse, 17m, 6b
7. Bohrinself, 18m, 7a
8. 7a for sure, 18m, 6c+
9. Der kleine Alpinist, 18m, 6c

ı

## **Morning Sun Rock**

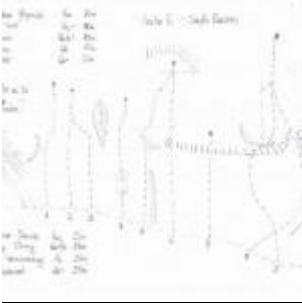
*(Rock starts 20m from "Der Kleine Alpinist")*

### **Routes from Right to left**

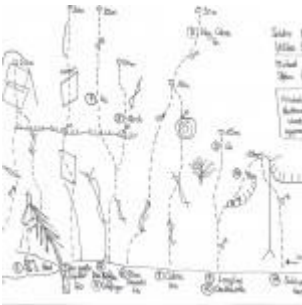
10. Schlusspfiff, 13m, 6a+
11. Chalkowitch, 13m, 7a+
12. Longline, 15m, 6b
13. Cobra, 18m, 6a
14. King Cobra, 12m, 6c
15. Blue Tornado, 18m, 6a
16. Goldfinger, 20m, 6b+/c
17. Die Bohra, 29m, 6c
18. Der große Alpinist, 30m, 6b
19. F1/4r's Hasi, 20m, 6a+
20. Offside, 20m, 5c
21. Mon amour, 18m, 5b
22. Verdoneque, 27m, 6b
23. Cornetto, 32m, 6c+/7a
24. White Line, 30m, 7a+
25. Der letzte Alpinist, 28m, 6

26. Center Court, 25m, 7b+

27. Falcon Crest, 25m, 7a+



Topo “ Sector E ” #1



Topo “ Sector E ” #2



Topo " Sector E " #3



Topo " Sector E " #4



Topo " Sector E " #5



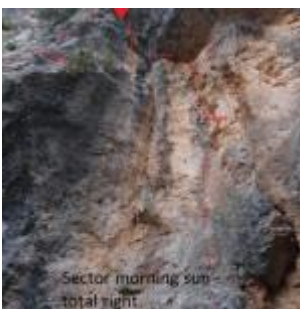
Topo " Sector E " #6



Topo " Sector E " #7



Topo " Sector E " #8



Topo “ Sector E “ #9



Topo “ Sector E “ #10



Topo “ Sector E “ #11

---

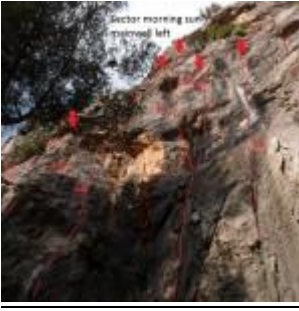
Topo " Sector E " #12



Topo " Sector E " #13



Topo " Sector E " #14



Topo â€ “ Sector E â€ “ #15

**4 COMMENTS**

**ZUZANA & FAMILY**

.

April 26, 2014

.

.

# MILNA (PANDOLOVICA) CRAG



Pandolovica is a recently developed crag which is overlooking the road above the small cove Milna. The crag has enormous potential for future bolting in all styles (vertical, overhanging, roofs) and can be climbed all through the year.

## Basic info

**Parking** – No, but can park around the road

**Approach** – Walking 15min

**Season** – All through the year, hotter in the summer

**Climbing** – Moderate grade routes

**Equipment** – Sport climbing equipment, up to 70m rope, up to 15 quickdraws.

**Route list** – [Click here](#)

## Getting there

If you are driving from the town of Hvar, you will see the direction sign to the crag on your left just before the village Milna. Follow the sign and after a warm up access lasting 15 minutes, you are ready to climb and enjoy a view of the Adriatic sea. If you are driving from Jelsa/Starigrad and other places on the north side of the island, take the road towards Hvar, go through the tunnel and after you reach Milna, you will see a sign directing you towards the crag. See our [interactive map](#) for details.

## Characteristics

As in all cases on Hvar, you may be passing over private property to reach the crag, so be respectful to the owners and leave everything as you found it. During the summer, it tends to be too warm in the peak season, but climbable in the morning and in the afternoon. In other seasons, it is a perfect spot to enjoy the effect of sunny Hvar on your mood.

## MILNA ROUTE LIST

Routes from left to right. Please send us comments about the grades to [roko@hvarclimbing.com](mailto:roko@hvarclimbing.com).

## Sector A (left side)

1. Seebar 6b+ 20m
2. Lavanda 4b 12m
3. Mirta 5b 15m
4. Juricin 5b 15m
5. Sipar 6b 12m
6. Kaleta 6a 10m
7. Mašklin 6a 25m (new grade proposed, used to be 6b+)
8. Lata 6b+/c 25m (new grade proposed, used to be 7a!)
9. Bovan 6a+ 25m (new grade proposed, used to be 6c!)
10. Milna 6a 25m
11. Grablje 6c 20m

## Sector Orange (central)

1. Česmina 7a 25m
2. Gradele 5c 10m
3. Cili Bajam ? 20m traverse

## Sector B (right)

1. Gamba! Gamba! around 7b 25m
2. Midnight lightning – around 7a+ 32m
3. Franka – 6b 32m
4. Bevanda 6a+ 22m (new grade proposed, used to be 6b+!)
5. Fjaka 5c 20m (new grade proposed, used to be 6a!)
6. Lastovo 6a/a+ 20m
7. Sušac 6a 20m (new grade proposed, used to be 6a/a+!)
8. Pelješac 6a+ 20m
9. Korčula 6a+ 20m (new grade proposed, used to be 6b+!)
10. Horizon 5c 20m

## Sector CBD (far right)

1. Dalibor Gelo 7c 25m
2. 3, 4... as around 7c
3. Mačić around 7b+

4. Škura bura around 7c
5. Hvarska Idila 7a
6. Izgubljeni dječak 7b+
7. Aromaterapija 7a+(b)

# POKRIVENIK CRAG



Pokrivenik by Boris Čujić

Finally Pokrivenik came to life as a new hotspot in development on the island. We just scratched the surface with the first 25 routes, the potential is for at least a 100.

**Please be careful – the routes are new and are still not clean enough. Helmet is obligatory for both the climber and the belayer. Loose rock WILL fall off. It needs mileage.**

## Basic info

**Parking** – Not available, but parking around the road is possible

**Approach** – Most sectors 5-10 minutes from the road

**Season** – Summer, Spring, Autumn and Winter. Shade available in the summer on one of the faces

**Climbing** – Easy, moderate, hard

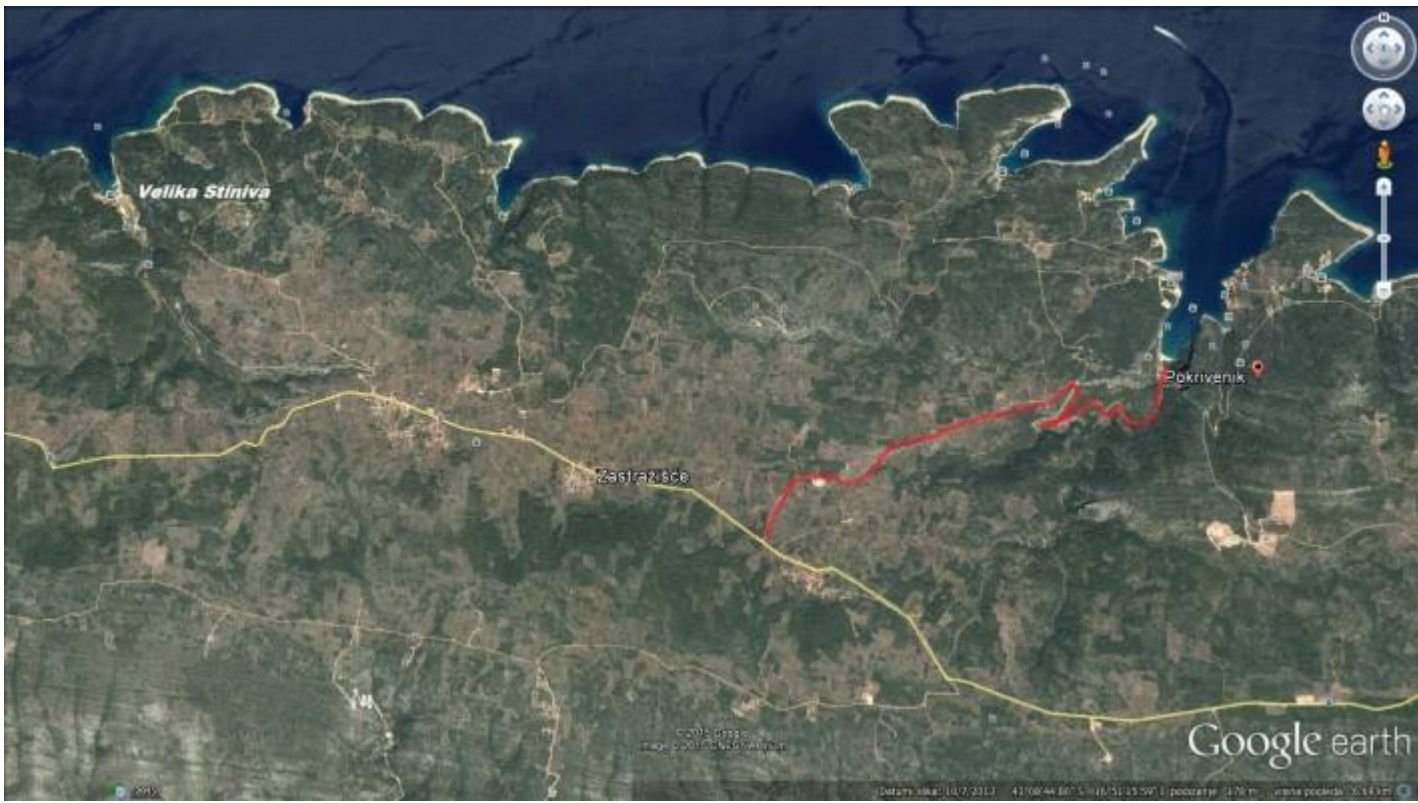
**Equipment** – Sport climbing equipment, up to 70m rope, up to 15 quickdraws.

**Route list** – [Click here](#)

## Getting there

The climbing area is situated in a little cove called Pokrivenik (3km from another crag in Vela Stiniva), with 5 houses, a camp and a nice beach. If you are coming from the direction of Starigrad/Hvar/Jelsa and other places on the west side of the island, just take the main road to Sućuraj. After about 15km from Jelsa, you will reach a hill-side village Zastrazišće. In the village itself, turn left at the sign for "Pokrivenik" .

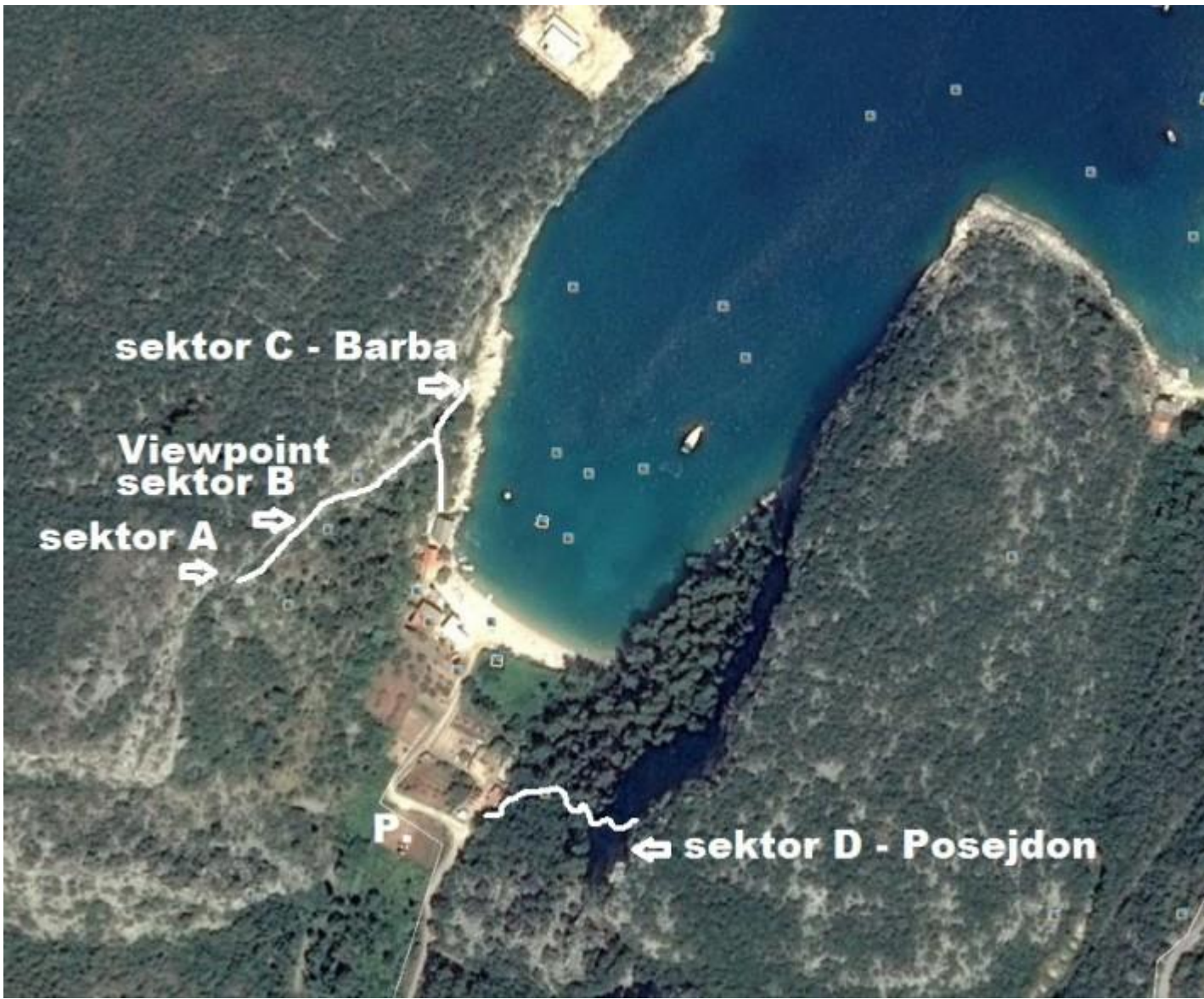
If you are coming from Sućuraj or other places on the east side, or you are taking an express 30min ferry from Drvenik (near Makarska, on the mainland), just carry on towards Jelsa for 30km. Do not take the first turn to Pokrivenik, you will take the exit when you reach the 2nd (!! ) exit to Pokrivenik. Follow the road and after about 1,5Km take a sharp turn to the right and follow this new road to the sea.



Map to Pokrivenik by Boris Čujić

## Approach

Each sector is 5-10 minutes from the end of the road. Please mind that you are passing over private land and be polite to the locals and owners. Take a look at the picture for the approach routes.



Approach map by Boris Čujić

### Characteristics

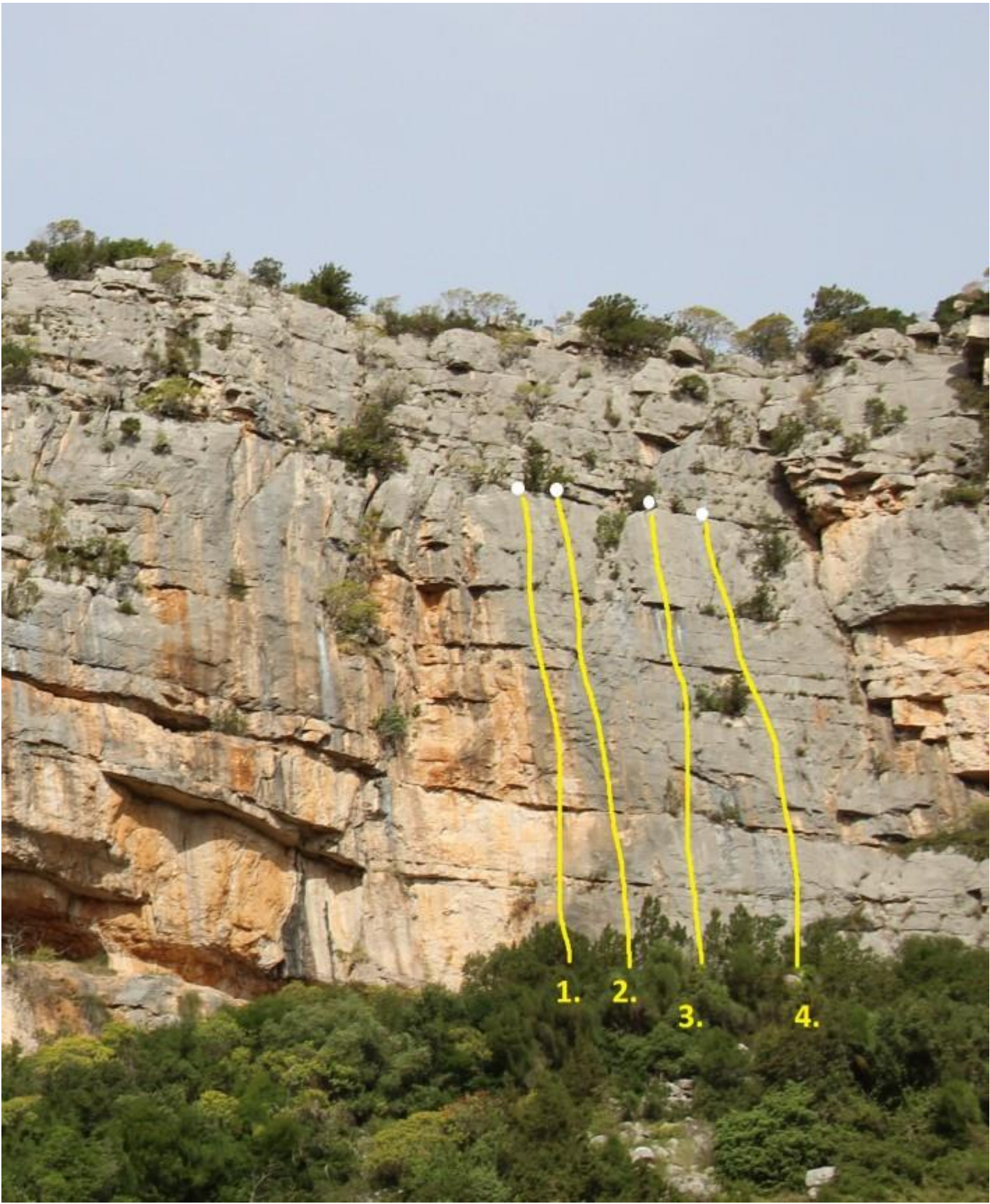
It is currently equipped with around 25 sport routes and has good potential for more bolting. It is new and still a bit wild, loose rock is still falling and you need to know what you are doing when climbing here.

# POKRIVENIK ROUTE LIST

Routes from left to right. More routes may have been bolted in the mean time, we will try to update as soon as we find out.

**!! ALL GRADES ARE PROVISIONAL – MAY CHANGE UP TO TWO GRADES UP OR DOWN !!**

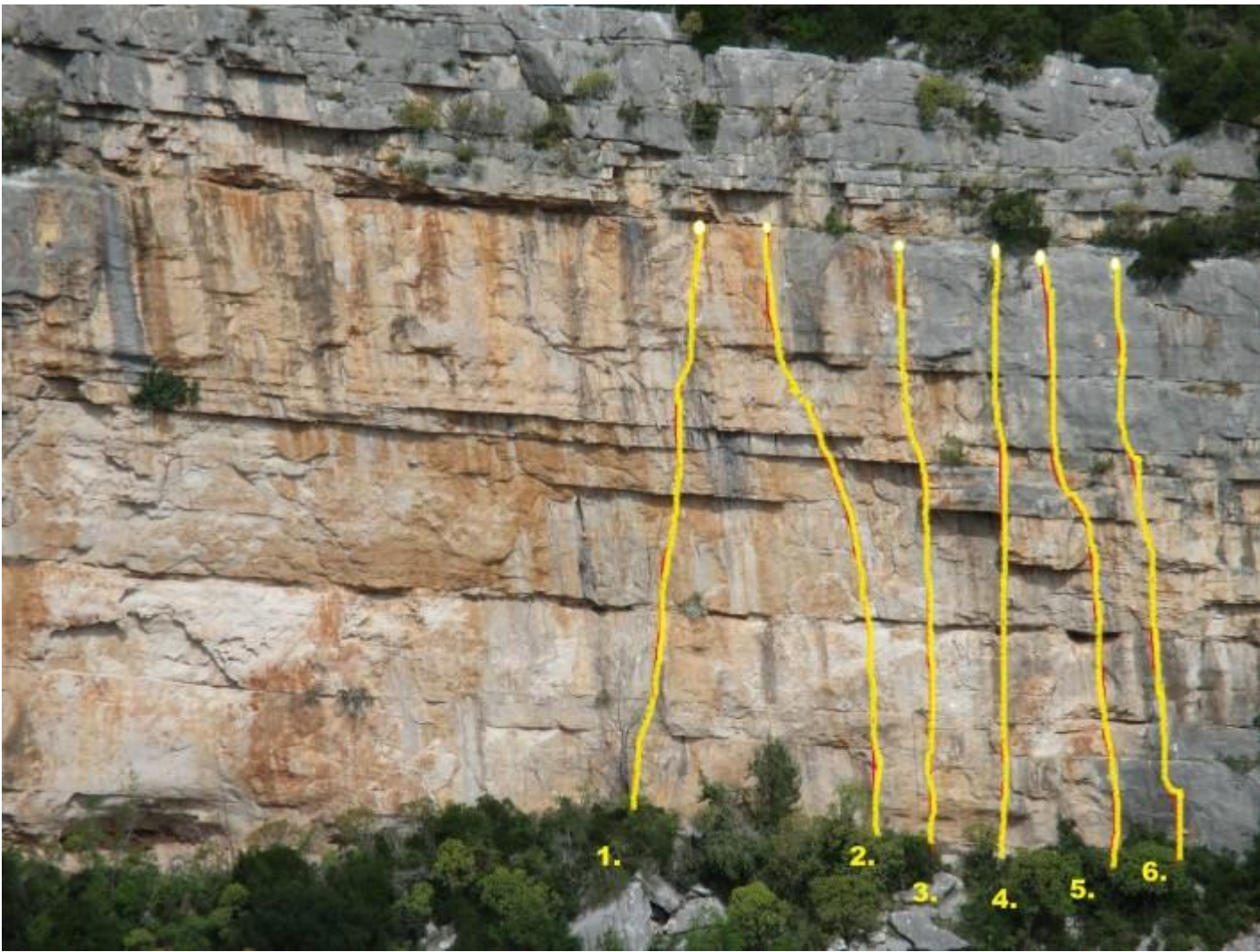
**Sector Viewpoint A**



Sector viewpoint A

1. Kuta Reef 7a 25m
2. Hungry and Dirty 6c 25m
3. Mr. Glue 6b+ 25m
4. MÄDewI 6b 25m

### Sector Viewpoint B

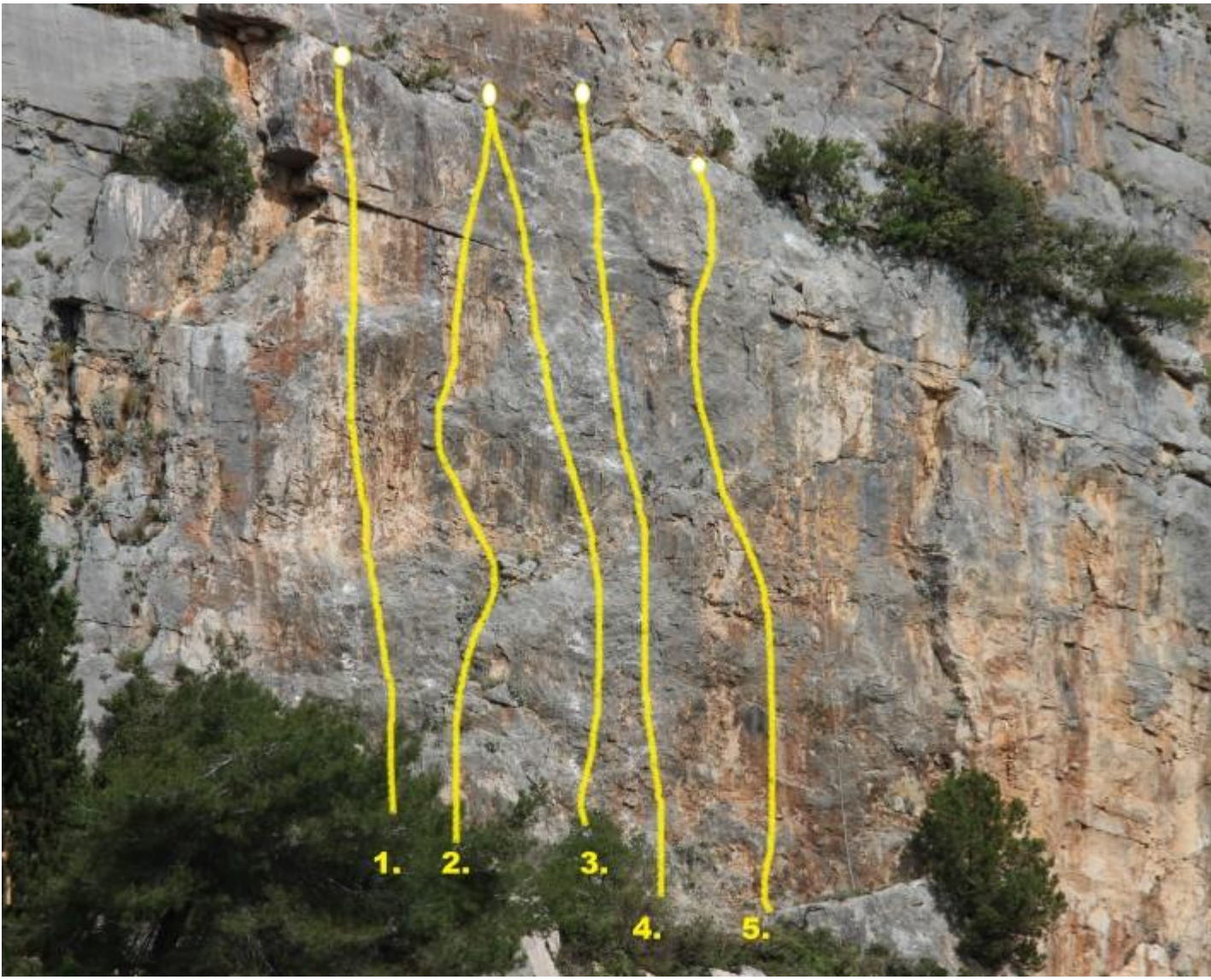


### Sector Viewpoint B

1. Dreamland 7c 30m
2. Viewpoint 7b+ 30m
3. Uluwatu 6b+ 30m

4. Strangers blood 6c 30m
5. False tears 7a 30m
6. Impossibles 7a 30m
7. ? 5a-5c (earlier route by somebody else, we did not try to climb yet)
8. ? 5a-5c (earlier route by somebody else, we did not try to climb yet)
9. ? 5a-5c (earlier route by somebody else, we did not try to climb yet)

## **Sector Barba**



### Sector Barba

1. Prova 6c 20m
2. Barba 6b 20m
3. Gajeta 6c 20m
4. Jidro 6b+ 20m
5. Sidro 6b 20m

### Sector Posejdon



## Sector Posejdon

1. Janin ples 6c+ 23m
2. Posejdon 6c 23m
3. Afrodita 6b 23m
4. Rahman Baba 35m 8a+
- NEW. Argo 7b+ 25m
5. Glykon 7a+ 25m
6. Neptun ? 7c 25m
7. Padang Padang 7c 30m
- NEW. Slavogost 7b 30m
8. Bakerstreet 6b 30m

## 2 COMMENTS

# STRAĆINE CRAG

[Click here for pictures of Straćine](#)



Straćine is a crag near Starigrad and Selca, recently developed into a climbing area.

## Basic info

**Parking** – Enough for 4 cars, usually available

**Approach** – Walking 10-15min

**Season** – Summer, Spring, Autumn and Winter. It is facing North.

**Climbing** – Easy and moderate

**Equipment** – Sport climbing equipment, up to 70m rope, up to 15 quickdraws.

**Route list** – [Click here](#)

## Getting there

This crag is located near the village Selca. You will reach the village by driving from Starigrad town towards Hvar and taking a left turn before you reach Starigrad ferry port. Check out the [interactive map](#).

## Approach

Just as you pass Selca, you will see some parking spots on the left side of the road. Park there and go up to the crag by a narrow unmarked route through the bushes.

## Characteristics

It is currently equipped with around 20 sport routes and has good potential for more bolting. It is north faced so the best season for climbing would be spring and summer, but due to the mild climate on the island, climbing is possible all through the year.

# TRA 횡 INE ROUTE LIST



From left to right.

Left side

1. Igra 5a 10 m
2. Barka 5b 10 m
3. Tri sestrice 5c 10 m
4. Leut 6b 12 m
5. Sre 횃 a 6c+ 12 m
6. Je 탑 6c 12 m
7. The Doors 6c 15m (No anchor. Instead: stainless steel ring glue-in)
8. Hlavono 탑 ec 7a 15m (No anchor. Instead: carabiner in the last bolt)

### **Middle**

1. Cro.challenge.com 5b+ 20 m
2. F 6c 24 m
3. A 6b 27 m
4. R 6b 25 m
5. O 6c+ 27 m
6. S 6b 20 m

### **Right side**

1. U.S. Aid 4c, 4b+ 44 m (multipitch)
2. Stari Grad 5c, 6a 44 m (multipitch)
3. Kr 퀴 5a 22 m
4. Jurin 퀴 ufit 6b+ 22 m
5. Petar Hektorovi 횃 6a/a+ 22 m
6. Mudri Dolac 6b (No anchor. Instead: carabiner in the last bolt)
7. Holliday crack 6c 28m (No anchor. Instead: stainless steel ring glue-in with maillon carabiner)

# PODSTINE (HVAR)

## CRAG



Podstine crag literally means "UnderRock" in Croatian. It is the closest crag to the town of Hvar and the only one in walking distance from it, although a challenging walk. This could be the place for you if you are located in the town of Hvar and stuck with no car or other transport, looking for some climbing.

### Basic info

**Parking** – “ Near the Podstine hotel, just after the small tunnel. May be difficult in the summer to find a spot

**Approach** – “ Walking 20-25min on good terrain and the crux at the end

**Season** – “ Spring, Autumn, Winter, Summer

**Climbing** – “ Moderate and easy. Not too many routes.

**Equipment** – “ Sport climbing equipment, up to 70m rope, up to 15 quickdraws.

**Route list** – “ [Click here](#)

## Getting there

When in Hvar, the easiest way to reach it is to follow the signs towards Podstine hotel (which is near the crag) and take your car there, but be careful since parking is very very difficult to find in the summer.

Also, you can walk by the coast from Hvar centre westward to reach the crag. Follow the signs to Podstine hotel and you should be ok.

Other ways include renting a boat or inflating your own in Hvar harbor and getting yourself 3Km from the harbor to the west. You can't miss the crag.

## Approach

Once you reach the Podstine hotel, just after the tunnel, turn to the bushes on the right. You will see a hole in the bushes before the first house from the tunnel.

After that, go westward by the sea towards the crag. It will take you some 20+ minutes, and the last 100m go over boulders in the sea, so be careful not to hurt yourself.

## Characteristics

At this time around around 20 sport routes have been bolted in sectors A and B. Other sectors have not yet been opened for climbing and may be on a private property.

The crag is facing south and is suitable for climbing all through the year, as are all crags on the island. Due to the fact that is at the sea level, mild sea breeze is making it easier to climb in the summer. Also, you can enjoy the sea while you are waiting for the perfect time.

### Sector B

**Approach to sector:** immediately after the tunnel in Podstine, take the right turn down the little walking road. Follow this road for better or for worse, it will take some 10 minutes until you see these routes.

1. Cima 6b+ 15m (Warning: combination of expansion and glue-in bolts)
2. Paklina 7a+/b 15m Warning: combination of expansion and glue-in bolts

### Sector A (All the way to the left)

**Approach to sector:** immediately after the tunnel in Podstine, take the right turn down the little walking road. Follow this road for better or for worse, it will take some 10 minutes until you reach a smallish path on the rocks in the sea (you will know it when you see it. Walk on these rocks in the sea and follow the not-so-beaten track for another 5-6 minutes. Some routes will have names written on the rock, you will know you are there.

1. Alga 5a 18m (Will probably need a boat for belaying)
2. Školjke i dojke 5b 23m (Will probably need a boat for belaying)
3. Kapetan Jakov 7a 23m (Will probably need a boat for belaying)
4. Debelo more 7a+ 23m
5. Škrapa 5a+ 13m (**Warning:** M10 expansion bolts, showing signs of rust)
6. Sirena 5a+ 13m (**Warning:** M10 expansion bolts, showing signs of rust)
7. Supermanu 5a+/b, 20mm (**Warning:** M8 expansion bolts, showing signs of rust, anchor making the rope scratch over a belly)
8. Macri 5b, 20m (**Warning:** M8 expansion bolts, showing signs of rust, anchor making the rope scratch over a belly)
9. Galeb 5b 15m (**Warning:** M10 expansion bolts, showing signs of rust)
10. Aevolution 5c+, 20m (**Warning:** M8 expansion bolts, showing signs of rust)
11. Waiting for Kate, 5c 25m (**Warning:** M8 expansion bolts, showing signs of rust)
12. Makina 6a+ 20m (**Warning:** M10 expansion bolts, showing signs of rust)
13. Demižana 6b 20m (**Warning:** M10 expansion bolts, showing signs of rust)
14. Spinacchium 6b+/c 20m (**Warning:** M8 expansion bolts, showing signs of rust)
15. Kung Fu Gold 6a 20m (**Warning:** M8 expansion bolts, showing signs of rust)